

1. Identification

Catalogue Number

B118748

Lot Number

711975540-5-1

Product Name

Basic Blue 26

Synonyms

Methanaminium, N-[4-[[4-(dimethylamino)phenyl][4-(phenylamino)-1-naphthalenyl]methylene]-2,5-cyclohexadien-1-ylidene]-N-methyl-, chloride; C.I. Basic Blue 26 (7Cl,8Cl); Methanaminium, N-[4-[[4-(dimethylamino)phenyl][4-(phenylamino)-1-naphthalenyl]methylene]-2,5-cyclohexadien-1-ylidene]-N-methyl-, chloride (9Cl); Victoria Blue B (6Cl); ADC Victoria Blue B; Aizen Victoria Blue BH; BTK

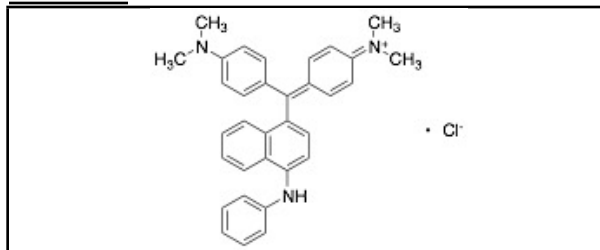
CAS Number

2580-56-5

Solubility

DMSO (Slightly), Methanol (Slightly)

Structure



Shipping Condition

This Product Is Stable To Be Shipped At Room Temperature

Molecular Formula

C₃₃H₃₂ClN₃

Source of Product

N/A

Long Term Storage Conditions

-20°C, Hygroscopic, Light sensitive

Molecular Weight

506.08

Purity

95%

2. Warnings

Hygroscopic, Light Sensitive

3. Analytical Information

Tests

Appearance

Specifications

Very Dark Brown to Black Solid

Results

Very Dark Brown to Black Solid

NMR

Conforms to Structure

Conforms

Elemental Analysis

Conforms

%C: 71.24, %H: 6.57, %N: 7.48

MS

Conforms to Structure

Conforms

UV Absorbance

Report Result

215 nm, 250 nm, 309 nm, 616 nm

Chloride Content

Report Result

6.6%

Additional Information

N/A

Purity is based on the analytical results of the tests performed. NMR and Elemental Analysis (if available) may have an accuracy of ± 2%. Isotopic purity is based on mass distribution observed. The contents of the specifications are subject to change without advance notice, and the specification values displayed here are the most up to date values.

4. Signatures

Reviewed by

Jingning Zhou

Product Quality Specialist

Reviewed by

Toni Rantanen

Manager, Quality Assurance

C of A Approved by

Chanell Chu

Quality Assurance Associate

Test Date

7/2/2024

Retest Date

6/30/2028